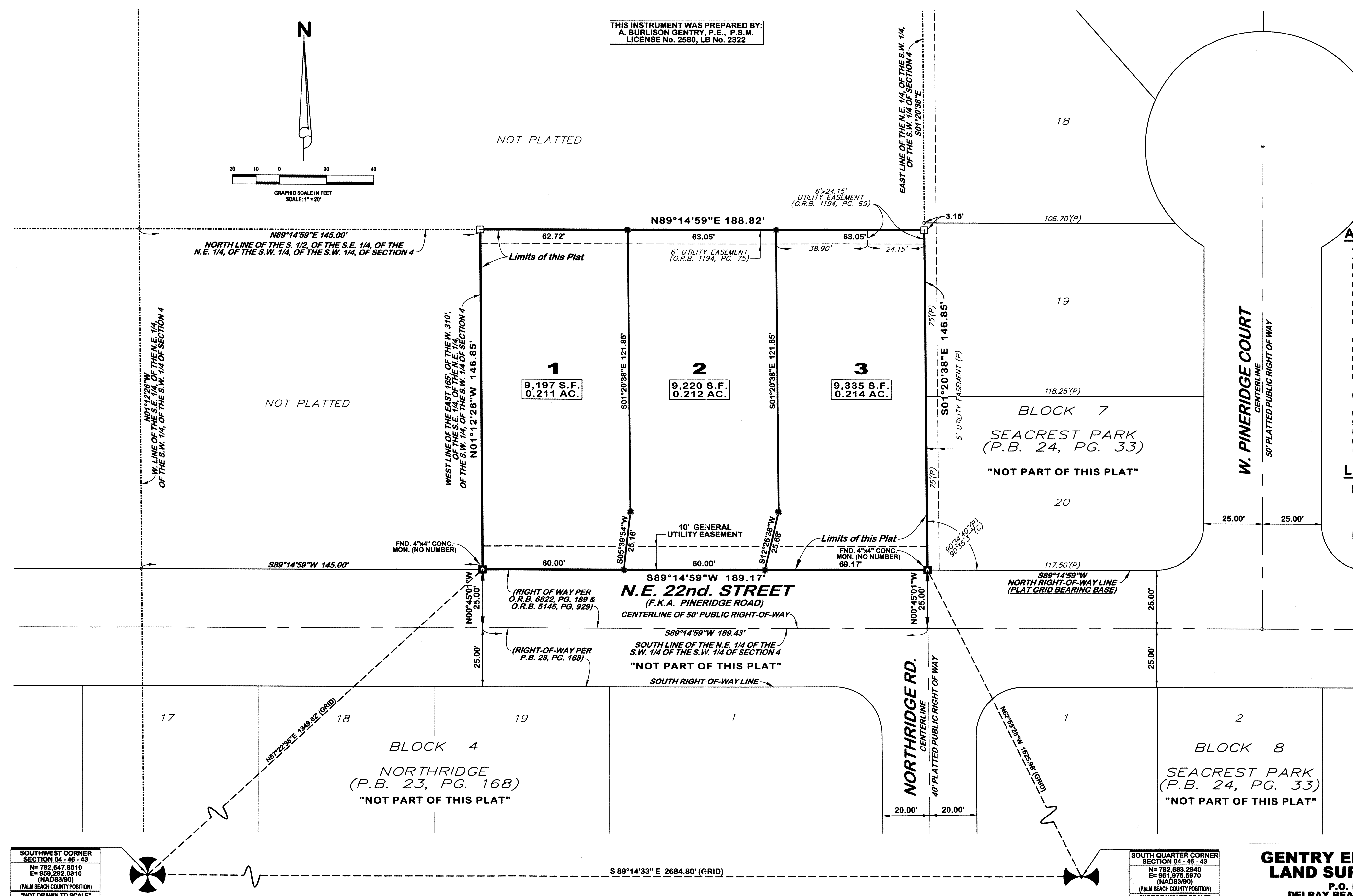
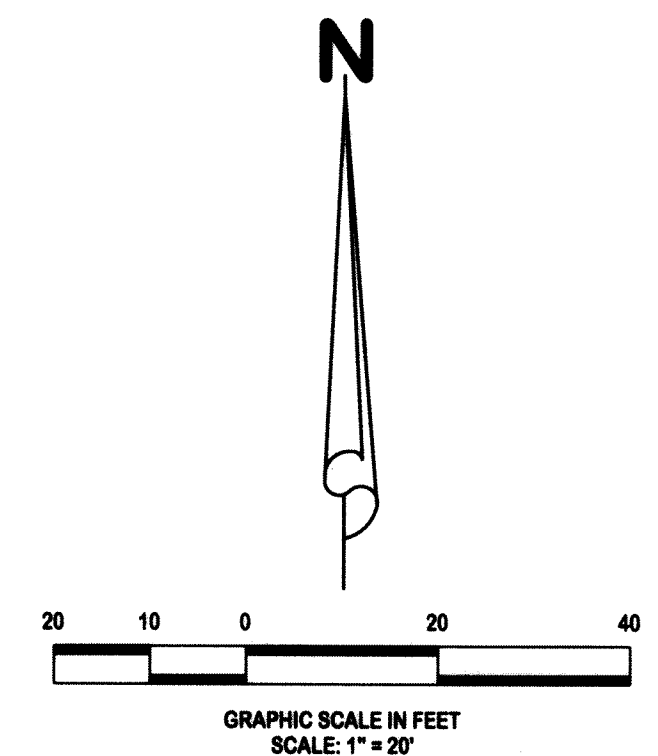


# SUNRISE OF DELRAY

BEING A PORTION OF SECTION 4, TOWNSHIP 46 SOUTH, RANGE 43 EAST  
CITY OF DELRAY BEACH, PALM BEACH COUNTY, FLORIDA

SEPTEMBER 2022

THIS INSTRUMENT WAS PREPARED BY:  
A. BURLISON GENTRY, P.E., P.S.M.  
LICENSE No. 2580, LB No. 2322



### ABBREVIATIONS:

- AC. = ACRES
- AVE. = AVENUE
- BLVD. = BOULEVARD
- CONC. = CONCRETE
- FND. = FOUND
- HWY. = HIGHWAY
- LB. = BUSINESS LICENCE
- MON. = MONUMENT
- NAD83/90 = NORTH AMERICAN DATUM OF 1983/1990 ADJUSTMENT
- O.R.B. = OFFICIAL RECORD BOOK
- P.B. = PLAT BOOK
- PG. = PAGE
- PGS. = PAGES
- P.R.M. = PERMANENT REFERENCE MONUMENT
- P.S.M. = PROFESSIONAL SURVEYOR AND MAPPER
- RD. = ROAD
- S.F. = SQUARE FEET
- R/W = RIGHT-OF-WAY
- W/ = WITH
- (P) = AS SHOWN ON PLAT

### LEGEND:

- ☐ = SET 4" x 4" CONCRETE MONUMENT WITH DISK STAMPED "PRM LB 2322" PERMANENT REFERENCE MONUMENT (P.R.M.)
- = FOUND 4" x 4" CONCRETE MONUMENT (NO NUMBER)
- = MONUMENT TO BE SET

SOUTHWEST CORNER SECTION 04 - 48 - 43  
N= 782,847.8010  
E= 959,292.0310  
(NAD83/90)  
(PALM BEACH COUNTY POSITION)  
"NOT DRAWN TO SCALE"

SOUTH QUARTER CORNER SECTION 04 - 46 - 43  
N= 782,883.2940  
E= 961,976.5970  
(NAD83/90)  
(PALM BEACH COUNTY POSITION)  
"NOT DRAWN TO SCALE"

**GENTRY ENGINEERING & LAND SURVEYING, INC.**  
P.O. BOX 83-2101  
DELRAY BEACH, FLORIDA, 33483